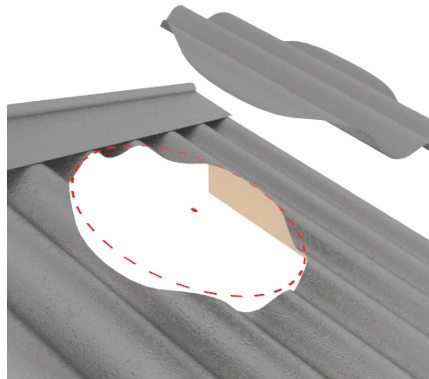


Installation Instructions for Static Roof Vent CORRUGATED IRON ROOF



Tools Required for installation:

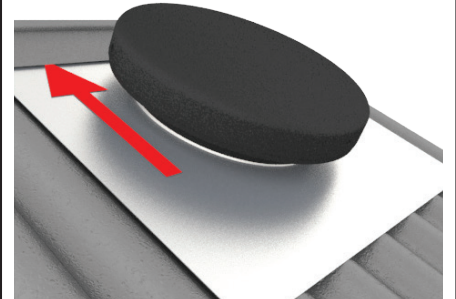
- Tape Measure
- Jigsaw
- Cordless drill with phillips head piece (Star)
- Silicone gun and silicone



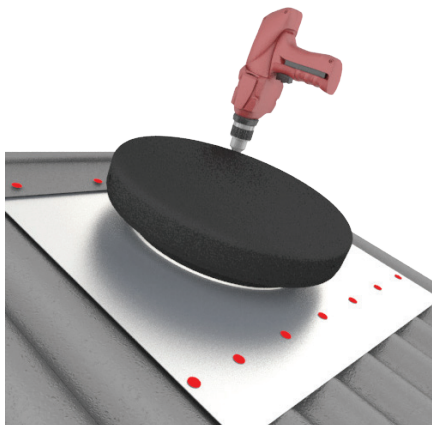
Using a drill, mark the centre point in the roof for Roof Vent location.

Cut out a circle 330mm in diameter. Remove the cut out.

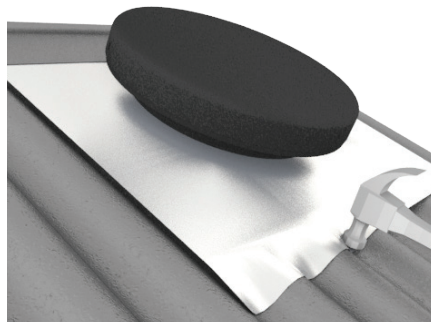
Try to position the Roof Vent at the highest point on roof.



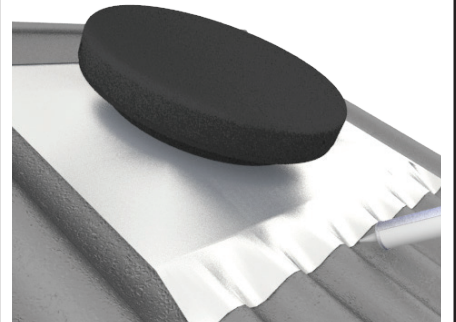
Position Roof Vent so the opening is located over hole in roof. Slide top of Tray under Ridge Capping if possible.
**Avoid installing over laps in sheets. If this cannot be avoided, you must use silicon to seal the laps from lowest point (soaker tray) to highest point of laps, ie: ridge cap.*



Using Tech Screws, screw the Soaker Tray into Ridge Capping and top of corrugations.



Gently form the top and bottom edges of tray to roof profile with a hammer or mallet.



Seal under all edges of soaker tray to roof with silicon.