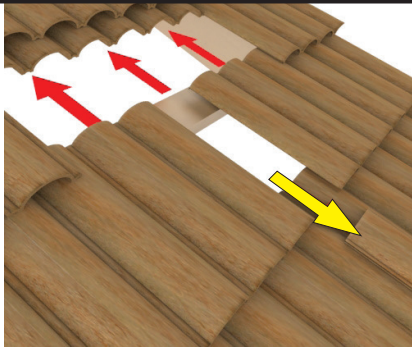
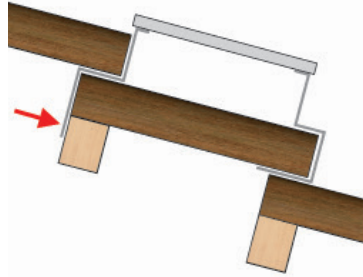


Installation Instructions for
Solar Light 170mm Round - 225mm Round
TILE ROOF

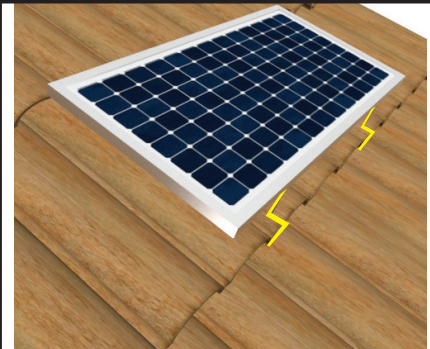
Before installing: test unit, Plug in and check light in daylight



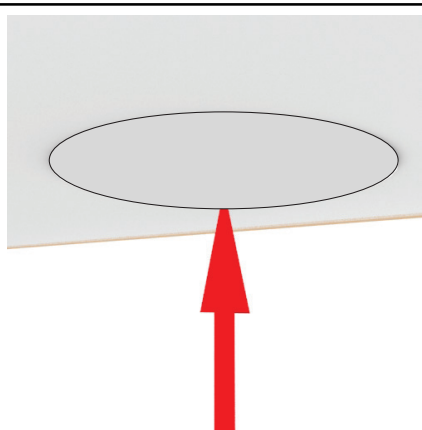
Decide on a roof location that will expose the Solar Panel to as much sunlight as possible. Avoid shading



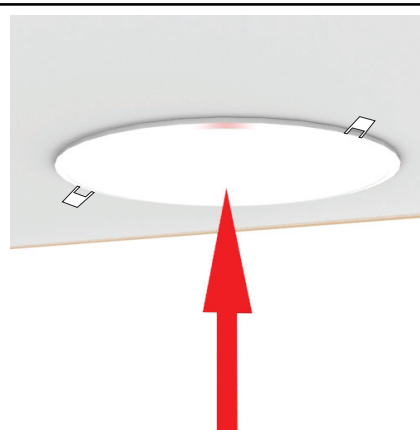
Space & attach brackets to Solar Panel so they align with the valley of the tiles.



Attach top-brackets to the roof battens. Fold bottom-bracket around and under the tile at the bottom. Run cable into roof cavity



Be aware of any obstructions or trusses where you want to located LED panel. Mark & cut plaster using template provided using a plaster knife



Connect cable from the solar collector. Fold one side spring clips located on the LED panel first and then do the same for the other side



Once clips have been folded up, push panel up flush to the ceiling, Clean off any fingerprints left behind.