

Installation Instructions for Roof Window Corrugated Roof

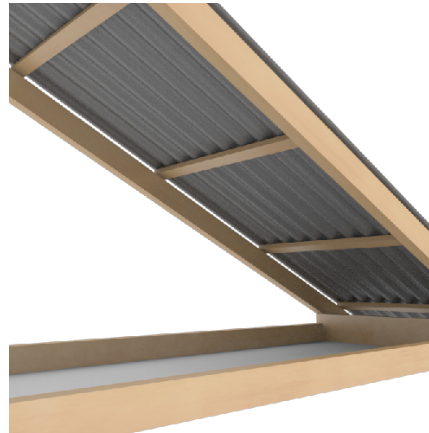
Included Components



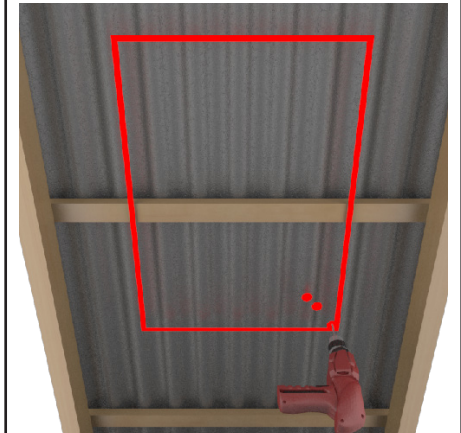
Roof Window
Assembly

Tools Required:

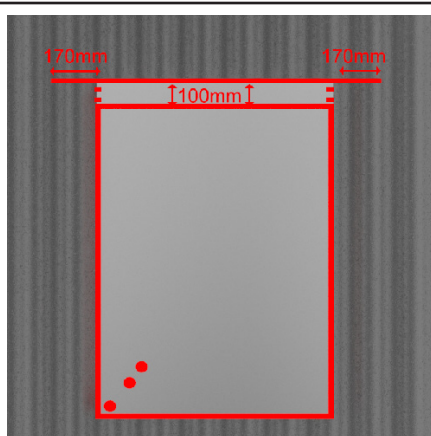
- Tinsnips
- Tape Measure
- Jigsaw
- Pliers
- Drill
- Silicon Gun with Silicon



Decide location for skylight by inspecting inside roof cavity. Try to avoid obstructions such as hanging beams, under purlins, etc. whenever possible.



When satisfied with location, drill a hole in a bottom corner of **frame** position. Drill two holes above it to indicate direction of window from your marker.

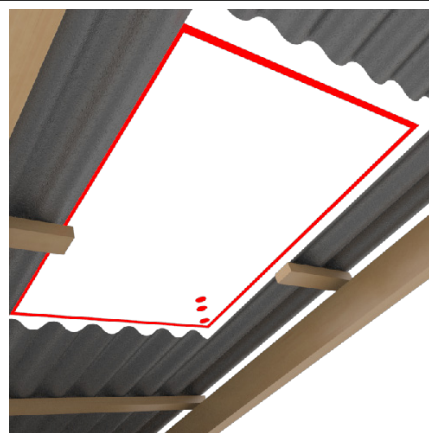


From outside of roof, using marker hole as starting point, measure the width of window **plus** 20mm.

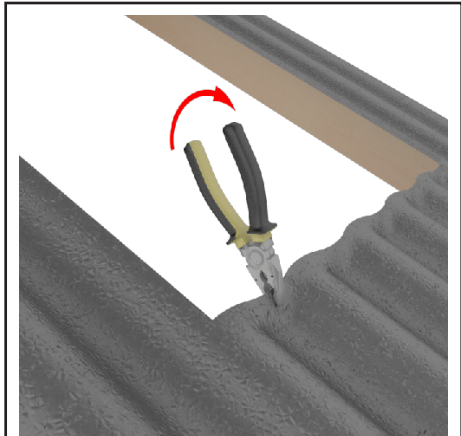
Measure the height of window **plus** an extra 100mm.

Extend the top line 170mm on **both** sides.

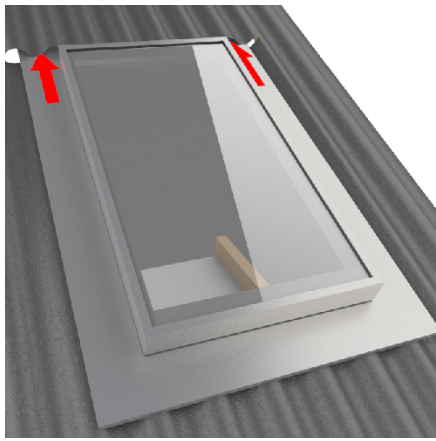
**Avoid installing over laps in sheets. If this cannot be avoided, must seal to highest point of laps, ie: ridge cap.*



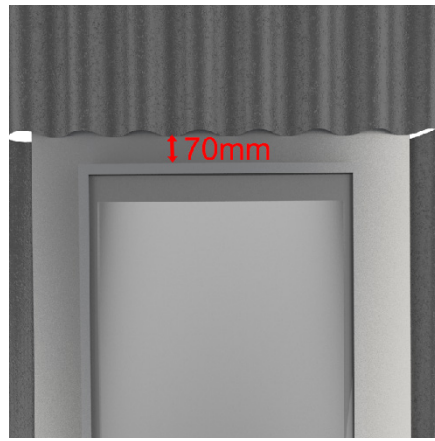
Cut out any battens in the opening.



Weather up the corrugations on the low side of the cutout by folding the low spots with pliers.

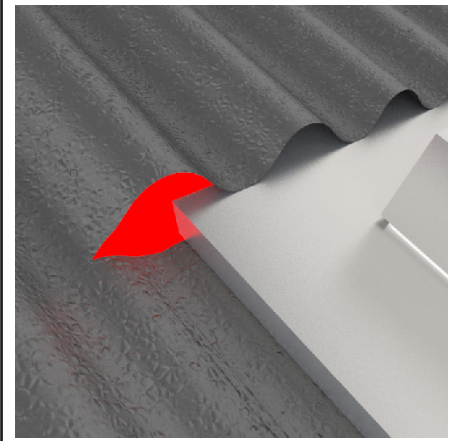


Slide the soaker tray up **under** the extended horizontal cut and rest the rest of the soaker tray on roof in position.

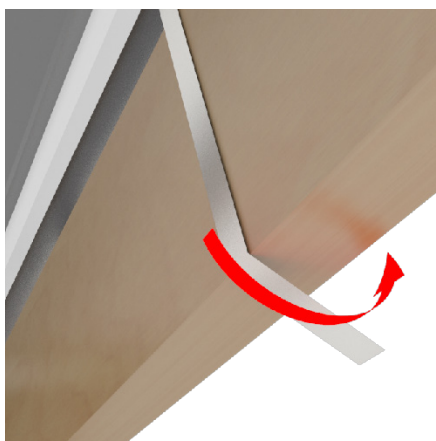


Leave 100mm of the soaker tray exposed at top.

Fix window into position using pop rivets or tech screws through the soaker tray.



Using silicon, seal the extended horizontal cuts.



There are four locating straps under the window.

Bend these around the rafters/trusses.



Fix locating straps to rafters/trusses using tech screws.